



COMFORTGUARD™ APU SYSTEM

Accessories, Kits and Filter Part Numbers

0541-1426

Fuel Pickup Adapter

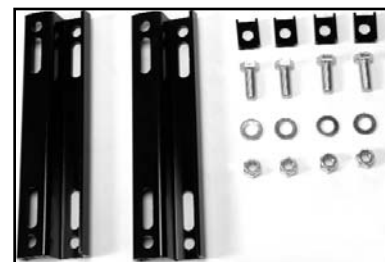
Eliminates the need to cut holes in the fuel tank. For use on trucks with an unused standard 5 hole bung available.



0541-1425

Offset Spacer Brackets

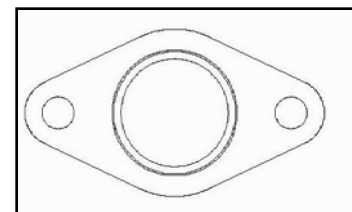
The kit is used for mounting the APU in areas where Huck bolts, exhaust pipe brackets or other hardware interfere with direct mounting to the frame rail. Also allows APU to move up or down to clear the cab or components. Suggested to have on hand before any CG installation begins because it is rarely known ahead of time whether it is required or not.



0155-2610

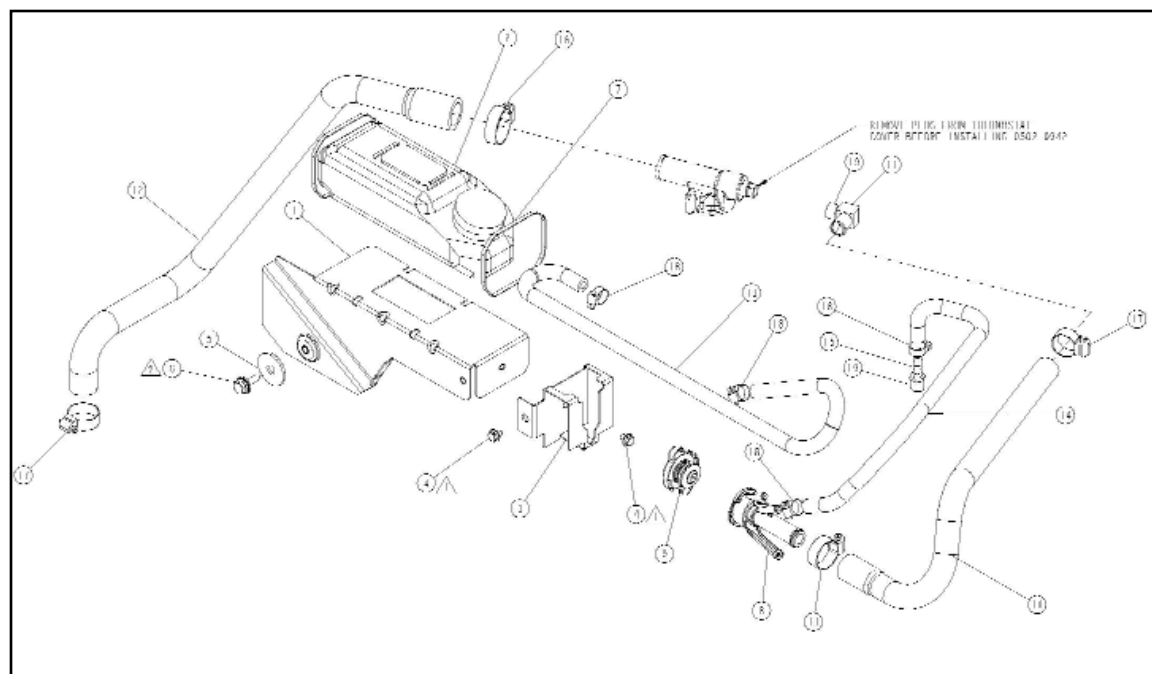
Exhaust Tube Adapter

For use on installations requiring a custom tailpipe usually routed along the frame rail toward the rear of the truck. Attaches a 1-3/8" OD outlet tube to the muffler outlet flange.



0541-1429 Stand Alone Coolant

For installations where integrating the APU with the truck engine cooling system is not desired. Includes a coolant reservoir, hoses and fittings to install inside the ComfortGuard APU unit.

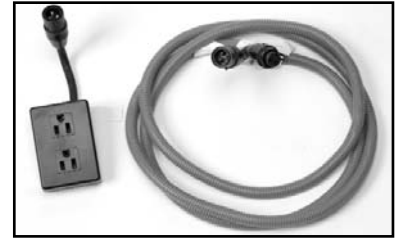


ComfortGuard APU Options

0541-1448

Duplex Receptacle

Duplex receptacle and 8-ft. plug-n-play connecting cable for an additional 120 volt socket. Same as parts supplied with ComfortGuard APU.



0541-1511

Shore Power Kit

Provides the hardware needed to power your ComfortGuard air conditioning and heating system and power outlets from a 120 volt external power source. Includes weatherproof truck-mounted input receptacle, transfer switch and box, and power cables with plug-n-play connectors.



0541-1512

Battery Charger Kit (for use with kit #0541-1511)

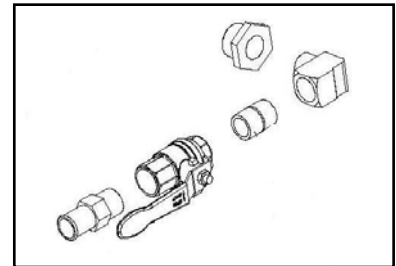
For use with shore power kit (0541-1511). Provides up to 20 amps for 12 volt battery charging. Features a smart controller that allows continuous operation without concern of overcharging batteries. Kit includes charger, cables and plug-n-play connectors for attaching to the shore power kit.



0541-1546-01

ISX Coolant Fittings

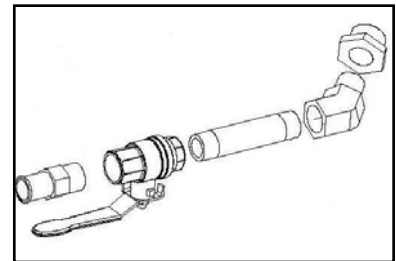
Valve & fittings for Cummins ISX engines (includes 27mm adapter bushings). Provides the shut-off valves and fittings needed to isolate the truck engine from the APU for servicing the cooling system.



0541-1546-02

ISM Coolant Fittings

For Cummins ISM or other engines with ½ in. NPT pipe connections. Provides shut-off valves and fittings to isolate the truck engine from the APU for servicing the cooling system.



0541-1547

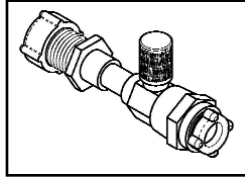
Integrated Coolant Hose

Includes 50 ft. of ¾ in. coolant hose and 4 hose clamps. Also includes plastic convoluted tubing for hose protection.



HVAC System Optional Kits (contact RVP/Coleman 316-832-3468)

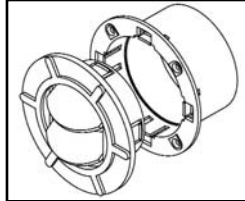
**1454-1022
Refrigerant
Connection
Extender**



**6330-3301
5-ft. Thermostat
Lifeline Extension**



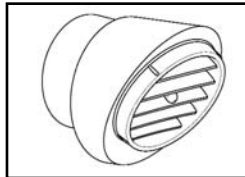
**6330-3531
Supply Air
Diverter—closeable**



**6330-3481
4-ft. Power Cable
Extension**



**6330-3521
Supply Air
Diverter—fixed,
rotatable**



**6330-3522
Flexible duct kit w/louvers**

Consists of a 25-ft. L x 3-in. dia. flex duct, one fixed, rotatable supply air register, two closable supply air registers, six plastic straps.

**2-Pack
Refrigerant Lines**

- 1454-1082 8-ft.**
- 1454-1102 10-ft.**
- 1454-1122 12-ft.**
- 1454-1142 14-ft.**
- 1454-1162 16-ft.**
- 1454-1182 18-ft.**
- 1454-1202 20-ft.**

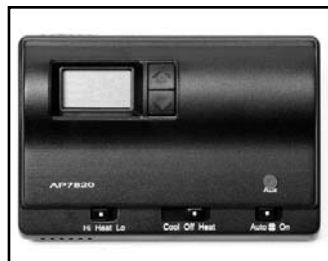


6330-3562 Hard duct kit with louvers

Consists of one 6-ft. black extrusion (cuts to length), three ball louvers, two black duct end caps, one 3-in. starting flange, one 12-in. black zip tie, four black push fasteners for end caps

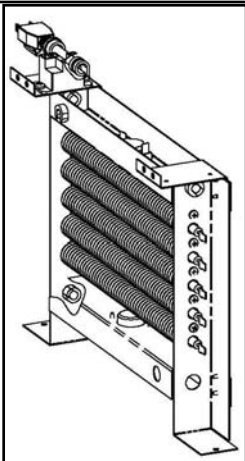
633-5421 Time Delay (20 seconds)

**6330-3361
Back Lighted
Wall
Thermostat**



**6330-4561
Arctic Heater 500
Watt Package**

Additional 586 watt heater producing 2000 BTU of heat for a system total of 10,000 BTU of heat output. Integrated heater system with "plug-in" electrical cord that is thermostatically controlled.



Cummins Onan Filters

Air filter element	140-3071
Oil	0185-5471
Fuel In-Line	0149-2794
Fuel Spin-on	149-2106



Cummins Inc.
1400 73rd Ave. NE, Minneapolis, MN 55432
Phone: 763-574-5188
Fax: 763-574-7242
or visit www.cumminscomfortguard.com
©2008 Cummins Inc.

F-1816 6/08